

MONTHLY MEMBERSHIP PROGRESS REPORT

District 14 N

Results as of: 5/31/2024

GMT:

LOCATION PENNSYLVANIA

GMT CA

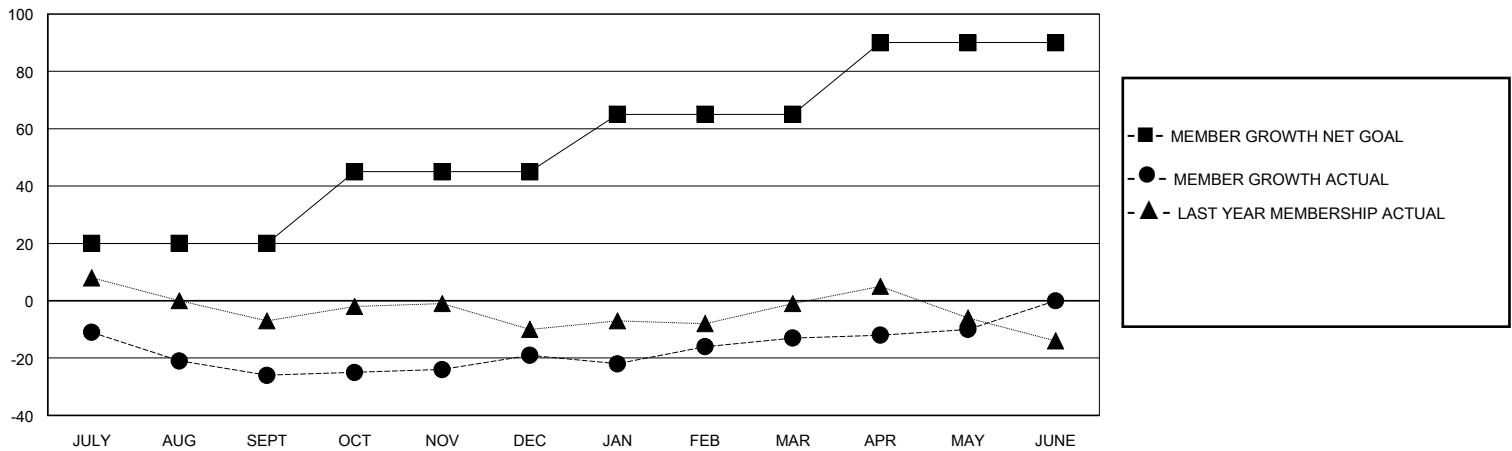
Clubs			
RESULTS FOR 2023-2024			
QUARTER	NEW CLUB GOAL	NEW CLUBS	DROPPED CLUBS
JULY/AUG/SEPT	0	0	0
OCT/NOV/DEC	0	0	0
JAN/FEB/MAR	1	0	0
APR/MAY/JUNE	0	0	0

Members			
RESULTS FOR 2023-2024			
QUARTER	MEMBER GROWTH NET GOAL	MEMBER GROWTH ACTUAL	DROPPED MEMBERS ACTUAL (including transfers)
JULY/AUG/SEPT	20	17	41
OCT/NOV/DEC	25	36	19
JAN/FEB/MAR	20	24	11
APR/MAY/JUNE	25	14	10

GOALS AND ACTUAL NEW CLUBS CUMULATIVE



GOALS AND ACTUAL MEMBERS CUMULATIVE



DROPPED CLUBS: 0	18 CLUBS OF 37 ADDED 1 OR MORE NEW MEMBERS	GENDER DISTRIBUTION MALE 651 (68.89%) FEMALE 294 (31.11%)
DROPPED MEMBERS DECEASED 12 CLUB CANCELLED 0 OTHER 69 TOTAL 81	CLICK HERE FOR CUMULATIVE MEMBERSHIP DATA	TOTAL FAMILY UNIT MEMBERS 189 FAMILY MEMBERS PAYING HALF DUES 99